

Our Vision

EPSOM AND EWELL



“

I want to be in a place that knows where it's going and what future it wants.



Looking to the future

All successful places have one thing in common: a clear view about where they are going and what they want to achieve. Having a keen eye on the future helps to shape the actions we take today and make sure that they really count.

The future is what you make of it; in Epsom and Ewell we are fortunate that the future has been shaped by the people who live, work and study here, through the largest engagement exercise ever undertaken in the borough. This is a vision that reflects the aspirations of our community and recognises Epsom and Ewell's extraordinary potential as a creative and vibrant place.

The vision builds on the borough's many strengths and characteristics: the beautiful parks and nature reserves; top-performing schools and further and higher education centres; a dedicated performing arts college, as well as being home to the only business school in the country for the creative industries. The borough also enjoys a strong and growing economy, excellent connectivity to the capital and beyond, as well as access to a diverse cultural offer, including a popular theatre, community spaces and award-winning leisure facilities.

The future of any place is influenced by its past. Epsom and Ewell is steeped in a rich history; from humble beginnings as a Saxon settlement to the location of Henry VIII's Nonsuch Palace, later becoming a fashionable Georgian spa retreat and a thriving market town, which we continue to enjoy even today.

Epsom and Ewell has long been a place renowned for commerce and opportunity, the exchange of ideas and learning, as well as a place of solace and wellbeing. Today, the borough remains a global landmark: the birthplace of Epsom Salts and the Derby, one of the greatest sporting events in the world.

The vision is a testament to the clarity and shared ambition of local people about the future of Epsom and Ewell. It provides an opportunity to harness the borough's inherent strengths as a place unlike anywhere else and gives confidence that by working together, we can look forward to an even more successful future.

This is Epsom and Ewell. This is our future.



Proud of our past

preparing for the future

The Epsom and Ewell of the future will carry forward many themes from its past. The borough's connectivity and its long standing associations with commerce, learning, creativity and wellbeing have been amongst its defining characteristics. It is also a place that has been shaped for centuries by a thriving horse racing heritage.



1538

Henry VIII builds Nonsuch Palace as an elaborate hunting retreat. The borough remains a destination for royalty even today.



1618

The discovery of a mineral spring establishes Epsom as a popular **spa town** attracting people from all over the world to take the waters.



1685

Lady of the Manor Elizabeth Evelyn receives a royal charter to hold a **market in Epsom**, a tradition which still continues today.



1780

Diomed wins the first ever Derby – a race that could have been called the 'Epsom Bunbury' were it not for the toss of a coin!



1847

The railway arrives, bringing jobs and families to Epsom and Ewell. Connection to the capital makes the borough a great place to live and work.



1896

The Manor Hospital is opened, the first in what was to be the world's largest cluster of psychiatric hospitals. It even had its own light railway!



1930

Stoneleigh is transformed from rural farmland to a thriving new community with its own shops, church, public house and cinema.



1953

NESCOT opens, as Ewell Technical College. The further education college now welcomes over 4,000 students a year to study in the borough.



1970

A flying saucer lands in the village and **Bourne Hall is officially opened** to the public with its library, museum and community rooms.



1974

Laine Theatre Arts is founded and soon earns a reputation as a high-class international training college for performing arts.



2008

The old School of Art receives the title of University from the Privy Council and is renamed **University for the Creative Arts**.



2020

The investment works on the **Market Place** come to an end, bringing a brand-new shared community space for everyone to enjoy.



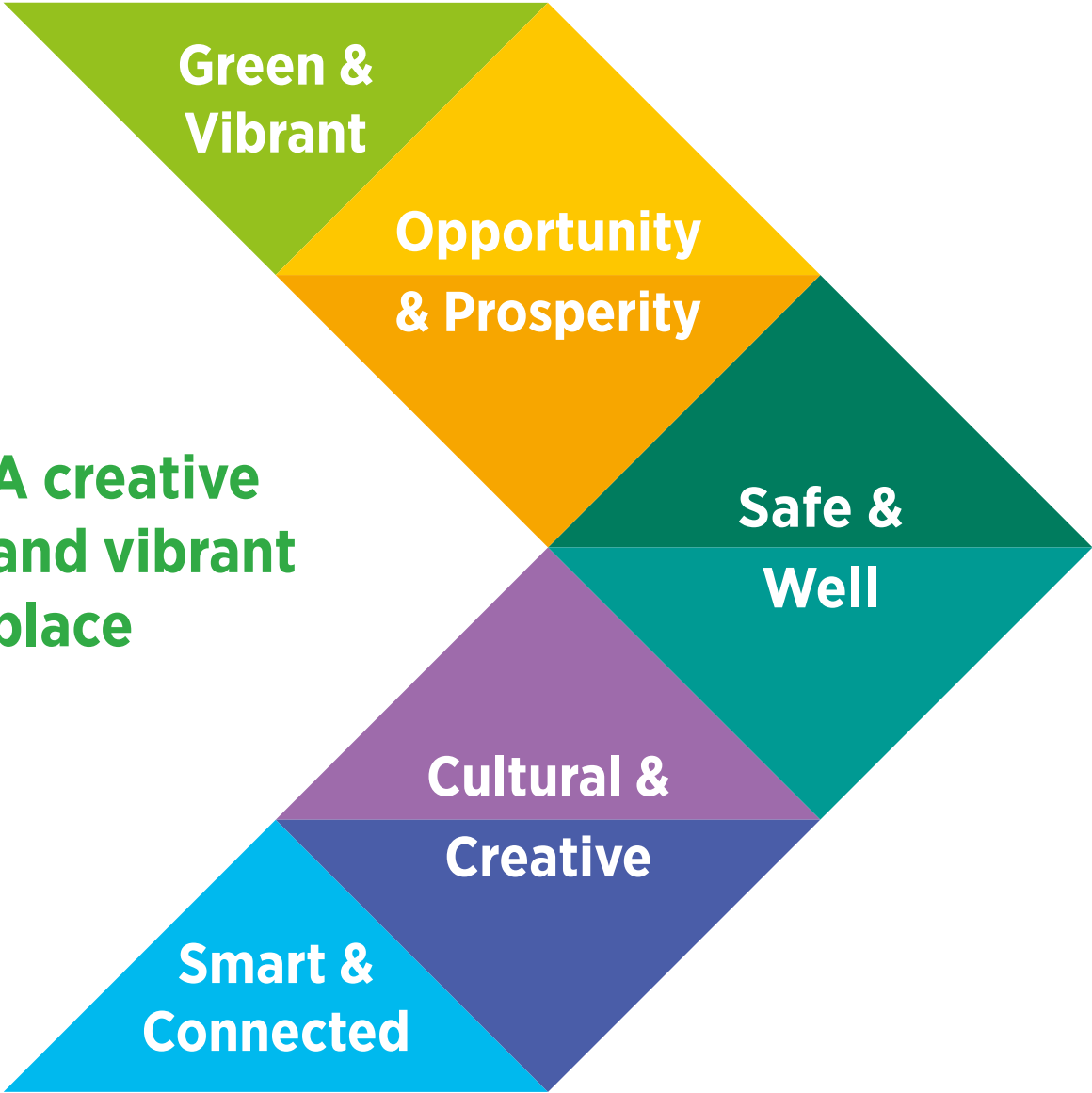
*In the future, I want to see
Epsom and Ewell thrive as a
place to live and work.*



Artist's impression of the new
state of the art facilities at the UCA
UNStudio

Our vision for Epsom and Ewell

As a result of extensive research and an in-depth public consultation, five distinct themes have emerged to develop our vision for Epsom and Ewell as a creative and vibrant place.



**A creative
and vibrant
place**

Green & Vibrant

Epsom and Ewell is already home to award-winning parks and open spaces. You don't have to go far to appreciate the beautiful areas and nature reserves that are on your doorstep.

Local people care deeply about keeping their borough green and vibrant with an even greater focus on tackling climate change, protecting the environment and supporting biodiversity.

Our vision

Where people care deeply about the environment

Rich with biodiversity and the best that nature has to offer

A great place to go walking or cycling with friends and family

A place with access to fantastic countryside and clean air

Tree lined streets with some of the best examples of eco-buildings

Clean and well maintained environment

Beautiful and well-designed public spaces



Epsom and Ewell – Home of the Derby

In 2040...

Epsom and Ewell is a modern market borough where nature and countryside thrive alongside sustainable, well-designed developments and vibrant public spaces where people can meet, play and relax.

In the future, our borough will offer greener, more energy efficient transport options including safe and improved cycle routes and walkways.

This is our vision for a green and vibrant Epsom and Ewell.



Opportunity & Prosperity

People come from all over the world to visit, work and study in Epsom and Ewell. With so many outstanding schools, education centres and a leading university, it's no surprise that the borough is a destination of choice for entrepreneurs and creative minds alike.

Local people want to live in a place where creativity is encouraged, where learning and ideas come together and anyone, no matter what their background, has the chance to succeed.

- Our vision**
 - A great place to start and grow your business*
 - An ambitious place where there is investment in the future*
 - A place to innovate and try out new ideas*
 - Affordable homes for families and local workers*
 - There's an excellent education on offer*
 - A place that offers an excellent start in life whatever your background*
 - Where ambition is encouraged, nurtured and celebrated.*



In 2040...

Epsom and Ewell is a borough that invests in the future – it supports businesses, allows them to grow and feel welcome.

In the future, our borough is rich with opportunity where local people thrive in education and their careers.

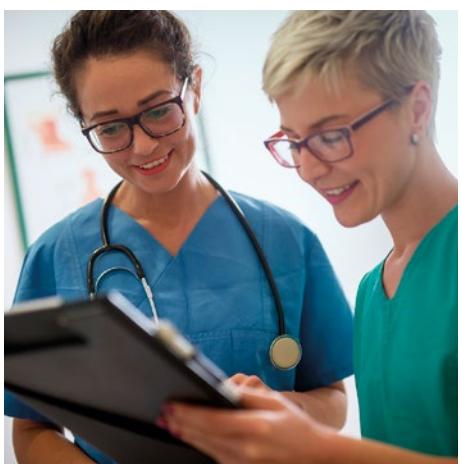
This is our vision for an Epsom and Ewell that is full of opportunity and prosperity.



Safe & Well

Epsom and Ewell is a great place to bring up a family. It's a place where people feel safe and well. The borough's unique heritage as a spa town continues to offer enduring qualities as a place of tranquillity and wellbeing.

Local people want to live in a place where everything is easy to access, where people are friendly, and willing to lend a hand.



Our vision

Where people can feel safe and secure at any time of day or night

A place that is family friendly, where people support each other

Easy access to world class health and wellbeing services

Where it's easy to keep healthy and active

Where there is clean air to breathe

Where there is a strong community spirit

Where people come before traffic



In 2040...

Epsom and Ewell will offer world class health and wellbeing services together with a strong and caring community spirit.

In the future, people will be able to live life to the full, whatever their age, with lots of opportunities to stay active and healthy.

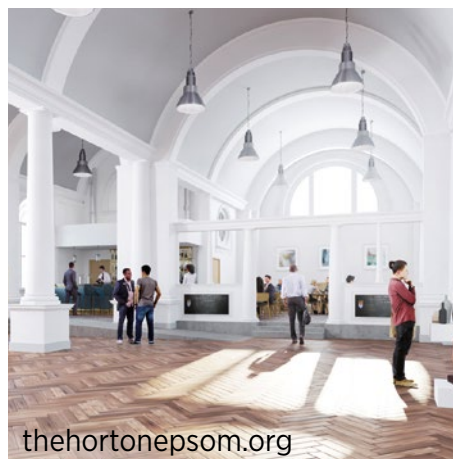
This is our vision for a safe and well Epsom and Ewell.



Cultural & Creative

Epsom and Ewell is brimming with local creative talent. It truly is a place where art, fashion, music and theatre come together. Epsom and Ewell is a place that embraces the modern without losing a sense of the past.

Local people want to live in a borough with a clear identity which distinguishes Epsom and Ewell from other places; one that promotes its unique characteristics, what it has to offer and is a real ‘go-to’ destination where people want to visit, study and invest.



thehortonepsom.org

Our vision

Proud of the rich local history and heritage

A clear and compelling identity which excites and inspires

A thriving market and unique retail offer

A home for creative enterprises

A wide range of local events and activities for people to take part in

A great place to meet up after work with friends and family

Where people work together for the benefit of the community



In 2040...

Epsom and Ewell will bring together the best of history, heritage and culture. Our town centres and high streets will offer a unique visitor and retail experience, where there is always something going on.

In the future, the opportunities available will continue to excite and inspire a new generation of creative and dynamic minds to live, work and study here.

This is our vision for a creative and cultural Epsom and Ewell.



Epsom and Ewell offers the best of both worlds – easy access to London and the West End as well as multiple areas of outstanding natural beauty just a stone’s throw away.

Local people want to see even greater connectivity in the future; not only with faster, more frequent bus and rail services, but also a high speed digital world full of innovation and new possibilities.



Our vision

Easy to get around and get things done

Climate friendly public transport options

A strong community where it’s easy to network and meet like-minded people

Part of Zone 6 and Crossrail 2

Where it’s easier not to own a car

Innovative and forward looking with the right skills for the future

A high speed digital infrastructure where it’s easy to connect



View of the City of London from Epsom Downs

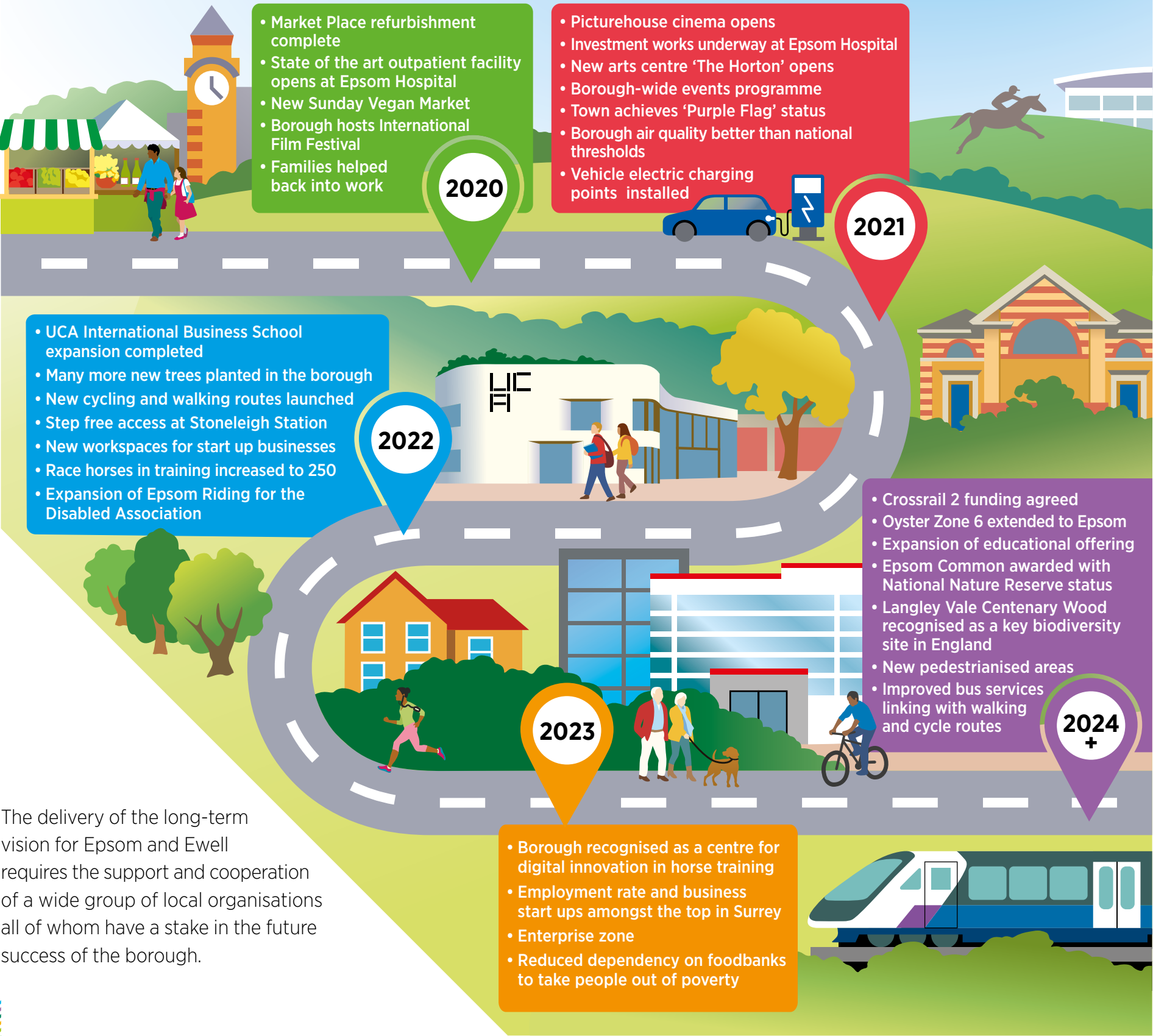
In 2040...

Epsom and Ewell will be a strong, connected and modern community – a place unlike anywhere else, with everything available on your doorstep.

In the future, getting around the borough (and beyond) will be even easier and there will be excellent opportunities to network and meet with like-minded people.

This is our vision for a smart and connected Epsom and Ewell.

Aspirations for the first five years and beyond



The delivery of the long-term vision for Epsom and Ewell requires the support and cooperation of a wide group of local organisations all of whom have a stake in the future success of the borough.

Together, we can...

These are just some of the organisations who are working together to deliver the vision.



Thanks go to the following supporters and organisations for providing photographs: Bourne Hall Museum, Epsom and Ewell History Explorer, Epsom Riding for the Disabled Association, Horton Chapel Project, Laine Theatre Arts, Nathalia Anzola Photography, Nescot, Paul Taylor (What's On In My Town Group), RAC Club Epsom, Rainbow Leisure Centre, The Ashley Centre, The Jockey Club, University for the Creative Arts and UNStudio. For full photography credits, please visit the Future40 website.



Get involved at www.future40.org