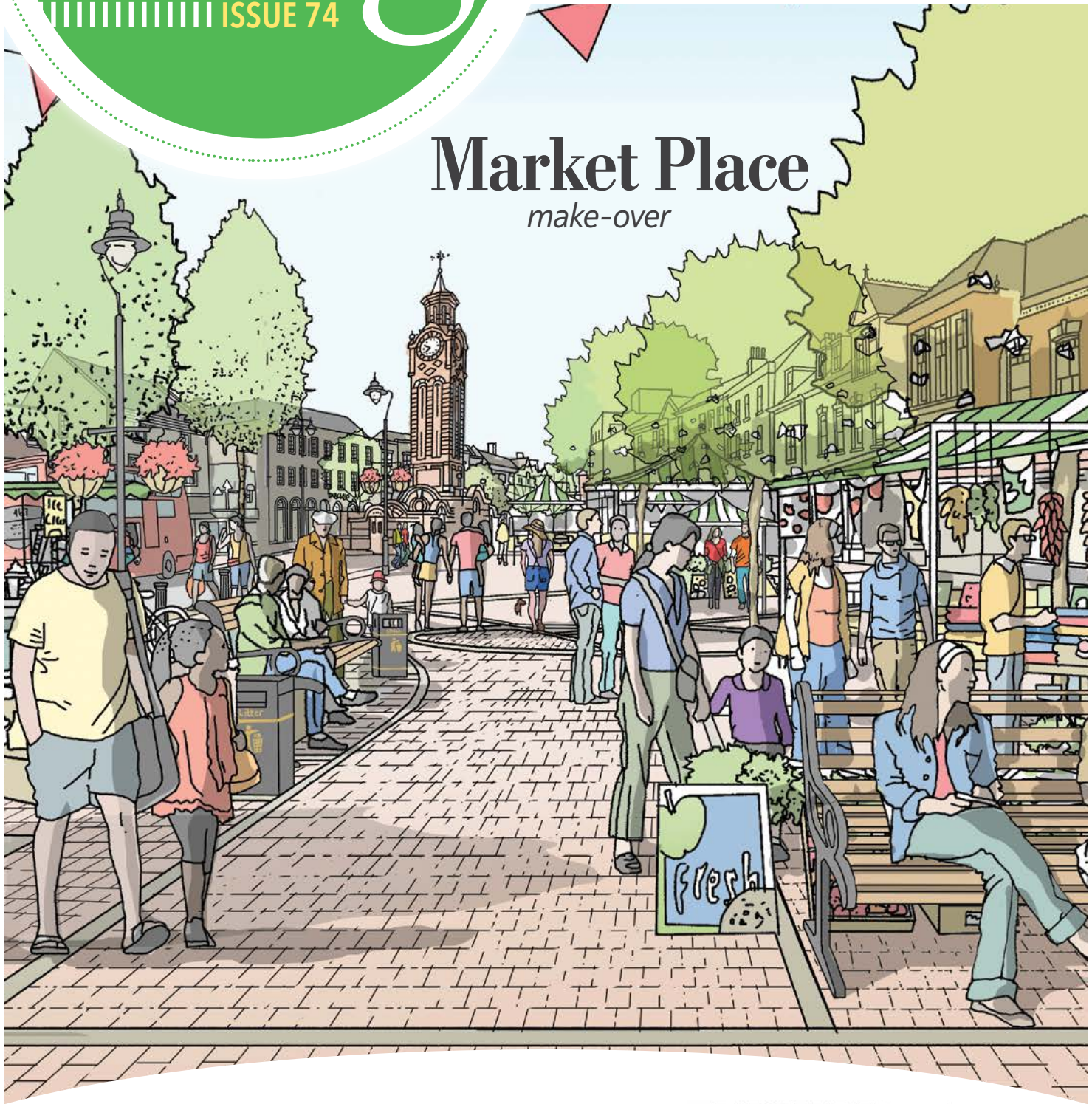


# Borough Insight

ISSUE 74

## Market Place *make-over*



*Keeping YOU informed...*





The right start for under 5s

# fenniesdaynursery & preschool



## LITTLE EXPLORERS WANTED

### REASONS TO LOVE...

- Beautiful custom-designed nursery with the highest quality facilities and resources
- Located just a few minutes walk from Epsom train station
- A passionate and welcoming team will work in close partnership with you
- Bright and spacious indoor and outdoor areas created to maximize early years development
- On site Nursery Chef prepares nutritious and delicious meals daily and caters for all dietary requirements
- Private, drive in car park and buggy park for safe and convenient drop offs and pick ups
- Fully inclusive fees and settle in period

### COME AND SEE US

Please arrange a visit  
0208 770 3222

[www.fennies.com](http://www.fennies.com)

[book.visit@fennies.com](mailto:book.visit@fennies.com)

EXCLUSIVE OFFER

**10% OFF**

10% off one months fees  
quote 'INSIGHT19'

  
Ofsted  
Good  
Provider

**Fennies, 1a Hook Road, Epsom, KT19 8TH**



# Contact us

Borough Insight is published by Epsom & Ewell Borough Council for residents and delivered free of charge to households in the borough.

If you have any queries on its contents please contact: **The Editor, Borough Insight, Epsom & Ewell Borough Council, Town Hall, The Parade, Epsom, Surrey KT18 5BY**

Phone: **01372 732000**.

Email: [boroughinsight@epsom-ewell.gov.uk](mailto:boroughinsight@epsom-ewell.gov.uk)

Designed and printed by: PPL Group, Global House, 1 Ashley Avenue, Epsom, Surrey KT18 5AD

Phone: 01372 743377

Email: [paul.dasilva@theppgroup.com](mailto:paul.dasilva@theppgroup.com)

Borough Insight is printed on paper from sustainable sources. Please read and recycle this copy.



## Advertising opportunities in Borough Insight

Would you like the opportunity to promote your business to 32,000 households? Epsom & Ewell Borough Council offers advertising space at competitive rates in Borough Insight magazine.

For further information contact PPL Group on 01372 847889 or email [paul.dasilva@theppgroup.com](mailto:paul.dasilva@theppgroup.com)

Epsom & Ewell Borough Council does not accept responsibility for, sponsor or endorse any products or services offered by advertisers in this magazine.

## e-Borough Insight

For the latest events, community information and lots more delivered straight to your inbox each month, subscribe to e-Borough Insight at <https://insight.epsom-ewell.gov.uk/subscribe>

## Social media

For the latest borough council news and information, alerts and updates, why not: visit our website [www.epsom-ewell.gov.uk](http://www.epsom-ewell.gov.uk)

Find us on:



# Mayor's message



## Councillor Neil Dallen

What a huge privilege and honour it is being Mayor of this wonderful borough.

Weekly meetings with my Chaplain; numerous visits to schools and youth groups, who've also been hosted at the Town Hall (including a group of Taiwanese students); calling into care homes, nurseries, shops and businesses; congratulating award winners and thanking volunteers, has all been a regular part of my life since last May.

There have been other highlights. An unexpected one was on behalf of the borough to support Scarlett Lee, a local resident, live on ITV's X Factor in full mayoral robes and chains.

And internationally, meeting mayors and choirs from Chantilly (France), Watermael-Boitsfort (Belgium) and Überlingen (Germany) has broadened my knowledge. Hopefully, our twinning with Chantilly will continue to grow. So too these other connections; offering residents of Epsom and Ewell further opportunities to participate in twinning events, and giving a message of peace and friendship.

Thank you for all the support that you have given us as Mayor and Mayoress.

With thanks, in particular, to the many businesses who have sponsored and supported the Mayor's three charities: Girl Guiding UK (Epsom division), Epsom and Ewell Talking Newspapers, and Work Stress Solutions. It has been a wonderful experience, to both raise funds and to discover more about these charities' considerable contribution to the borough.

I look forward to continuing many friendships and relationships in the future. And although this is my swansong as Mayor, I still have until May to support your organisation. My successor, I am sure, will be equally happy to help.





**Market Place 1800s with the former Watch House**

# Epsom's beating heart

Epsom's central Market Place has long been a defining focal point of this bustling market town. Today, the area is not only for shoppers there's a flourishing dining and leisure scene too, so now it's being brought into the 21st century.

There's little doubt that UK retailers are currently experiencing major change. And, although Epsom and Ewell is faring better than other similar sized towns, with considerably fewer empty shops and offices, the borough council wants to ensure it has a town centre where businesses can thrive.

The latest renovation of the Epsom Market Place, which has just started, is the first major public realm (that's the accessible space between buildings, squares, streets and parks) investment in the heart of Epsom for over 20 years. Running throughout 2019, with a break in the run up to Christmas, the aim is to boost the leisure sector and support local shops by providing an enhanced area, suitable for a wide range of vibrant activities.

None of the work is being paid for by local tax payers. Instead, the money is coming from the borough council, which is making use of the contributions that housing developers have made to fund local infrastructure schemes such as this. The actual work is being managed by Surrey County Council and undertaken by their contractors.

We have insisted that adjoining businesses and their customers should experience as little inconvenience as possible and that the market will remain open throughout the project. This will involve the use of temporary walkways.

Importantly, the Market Place's historical characteristics will be preserved and enhanced; the clock tower will be protected, with both the Richmond cattle trough and the time capsule stone taken to a specialist stone mason for restoration.

The current trees within the Market Place will all be removed and replaced. With good reason; a legacy of road being built upon road and topped with paving, is that existing trees have had insufficient space to grow and flourish. The new trees will be planted in more generous pits, enabling them to reach their potential.

“the market will remain open throughout”



**Market Place 1960s showing the market in the middle of the road. The Assembly Rooms is to the right of this picture (out of shot)**



Other improvements include: new seating, tree lighting, wayfinding signs and a drinking fountain to provide an environmentally-friendly alternative to buying plastic bottles.

The Evocation of Speed statue, commemorating the first Derby winner, will be relocated from Epsom Square, and we're talking with a local business adjoining the Market Place about an enhanced public performance area. We will also be working with the Emily Davison Memorial Project to offer a prominent location in the Market Place for their statue (see page 16 for more about this).

Whilst there have been changes, big and small, to the Epsom Market Place over the centuries, as there should if the area is to evolve and stay relevant to the times, it remains the heart of our community. This investment by the borough council will keep it healthy for many years to come.

“ the aim is to boost the leisure sector and support local shops ”



Market Place 2020: an artist's impression with the current work completed

## Market Place memories

- **Middle Ages:** Originally, trading centred on Church Street, whilst the area now comprising the Market Place was a large pond! The pond, surrounded by rural buildings, appears in a later survey of the area, with the Assembly Rooms (built 1692) adjoining this rural scene.
- **1700s:** An avenue of elm and lime trees once stretched from the Assembly Rooms to East Street, providing residents with shelter from the elements. In the late 1700s, Sir Joseph Mawbey, the Lord of the Manor, had the trees felled and sold for timber.
- **1800s:** In 1865 the Lady of the Manor, Elizabeth Evelyn, was granted the right to hold a market between the pond and the High Street. A Watch House once stood alongside the pond, before it made way for the building of the current clock tower. The area became surrounded by businesses, shops and inns. And when the pond was drained, celebrations for Queen Victoria's Jubilee in 1897 kicked-off a new venue for public events.
- **20th century:** The market temporarily fell out of use in the late 1800s but the council revived it in 1914. After World War II, widening of the A24 saw the Market Place almost disappear; the market itself was held in the centre of the road requiring shoppers to dodge the ever-increasing cars, lorries and buses. The opening of The Ashley Centre in 1984 allowed for the current road layout and the reintroduction of the Market Place in 1991.

**KEY  
PRIORITY:**  
Supporting our  
community



# Community Alarm

## more than just a button



Caring for a loved one is often an overwhelming and stressful task. Technology though has come a long way and the Community & Wellbeing Centre offers a range of support services to give you peace of mind.

'I hope Mum is okay?', 'I wonder if Dad's taken his medication?', 'I just want to know they're back safe.' Does this sound familiar? Our wireless Community Alarm system is a solution that notifies you, a family friend, neighbour, police or ambulance service in an emergency. However, what many people don't realise is that it also does much more than simply raising the alarm; in some cases, providing vital support for adults with learning difficulties or even for young children with epilepsy.

So, the next time you think about a Community Alarm, consider the benefits it has. Ensuring that anyone of any age who values their independence, is able to live safely, securely and happily for longer in their own home.



### Sandra's story

Sandra recently discovered that her elderly mother, Lillian, had become the victim of a bogus caller. She feels concerned about her mother's safety but knows that Lillian does not want to move house or go into a care home. She decided to install a Community Alarm with a telecare bogus caller alert button – a discrete solution that can notify the call centre and deter any con-artists. Lillian now feels much more confident answering the door. And knows that she can get help quickly, if needed.



### David's story

David has Down's Syndrome, is sometimes forgetful and is very trusting of others. His parents researched a number of telecare enabled sensors to manage safety risks. They decided to install a temperature extremes sensor in the kitchen, in case of a fire, and a flood detector in the bathroom, should the bath or sink overflow. Additionally, a property exit sensor alerts them if the front door is opened late at night or left open. David now enjoys living independently without his mum or dad checking-up on him 24/7.

### What can Community Alarm do?

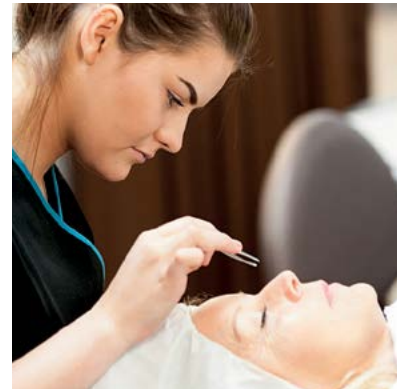
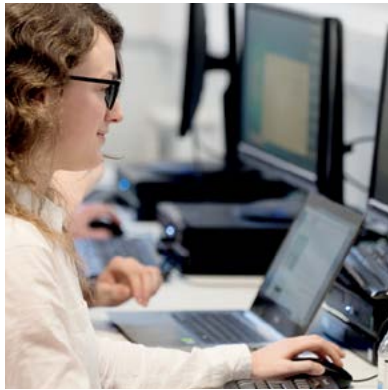
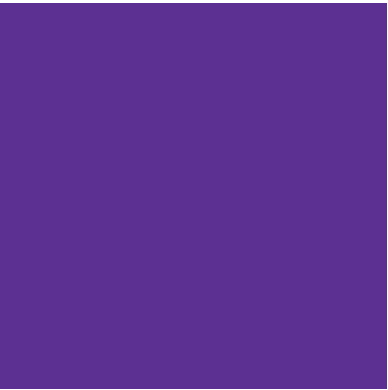
|   |               |
|---|---------------|
| Call an ambulance after a serious fall                                    | Safety        |
| Issue a warning if the gas has been left on                               | Safety        |
| Monitor levels of carbon monoxide   | Safety        |
| Notify those in the house if temperatures get too low (or too high!)      | Safety        |
| Monitor where and when someone enters/exits a property                    | Safety        |
| Raise the alarm if there is a fire starting                               | Security      |
| Deter or report bogus callers   | Security      |
| Reminders to take important medication                                    | Mental health |
| Alerts a carer if a loved one is wandering late at night or disorientated | Mental health |



Community Alarm is one of the many higher-needs support services available from the Community & Wellbeing Centre. To sign up for a FREE six-week Community Alarm trial, phone 01372 732000 or visit [www.epsom-ewell.gov.uk/support](http://www.epsom-ewell.gov.uk/support)

*Pictures used are indicative*





# Nescot, the college of choice

Join us at one of our open events:

2019  
**9**  
**MAR**  
**SATURDAY**  
**OPEN DAY**  
11am-2pm

2019  
**22**  
**JUN**  
**SUMMER**  
**FAIR**  
11AM-2PM

2019  
**22**  
**MAY**  
**OPEN**  
**EVENING**  
4.30PM-7.30PM

[www.nescot.ac.uk](http://www.nescot.ac.uk)



020 8394 1731

Nescot, Reigate Road, Ewell, Epsom, Surrey, KT17 3DS





# Making a house a home

Britain's housing crisis has many causes, too few homes for first time buyers being one. Yet latest government figures show the number of empty properties in England alone has risen to over 200,000.

Within Epsom and Ewell, we know of over 200 empty properties. We also have 800 local families on our housing register, desperate for a home. Additionally, there are residents within the borough who are stuck in homes that no longer meet their needs and lack suitable properties for them to move into.

The borough's empty properties reflect all housing styles and sizes, and some have been empty for many years. This is frequently the result of a dispute, either following the homeowner's death or a divorce. Some owners may have inherited a property but don't have enough money to repair or maintain it. Whilst others, may be holding onto their properties, speculating on a rising market. For each year a property stands empty, problems can mount. Damage from the elements and vandalism are common issues. Indeed, left empty for a long time, properties often become uneconomical to renovate and restore as habitable homes.

We actively try to discourage empty homes by applying the Council Tax Premium (currently 150 per cent of Council Tax) on properties that have been empty for more than two years. And, this premium, will increase to 200% for properties left empty for five years and 300% for properties left empty for longer than ten years.

All owners of these long-term empty properties have been contacted, to highlight the ongoing cost to them and the alternative solutions, such as our Private Sector Leasing Scheme.

And a renewed focus by councillors on empty homes, to further decrease the number within the borough, means that we'll continue to work constructively with the property owners. However, when this isn't possible and the long-term empty property is having a damaging effect on the surrounding area, compulsory purchase order powers will be used to bring empty properties back to use.

“ For each year a property stands empty, problems can mount ”

If you have an empty property in the borough and are interested in receiving support to refurbish, renovate, sell or let it, please email [EmptyHomes@epsom-ewell.gov.uk](mailto:EmptyHomes@epsom-ewell.gov.uk)





# Doors open to new homes

Keys have been handed to residents moving into the new affordable homes in Hollymoor Lane.



The development, on the site of a derelict block of flats, was undertaken for the council by Orbit, the largest builder of affordable homes in the UK. It includes two 5-bedroom houses, four 4-bedroom houses, three 3-bedroom houses and twenty-one 2-bedroom flats. Twenty of the homes are rented and ten are shared ownership (part buy, part rent).

There's also a retail shop which is occupied by long-serving lessees, and cornerstones of the community, Mr and Mrs Patel.

At a ceremony marking Hollymoor Lane's completion, Mayor of Epsom & Ewell, Councillor Neil Dallen said: 'I was speaking with Mr and Mrs Patel, who run the local shop that forms part of the development and who have been serving the community here for 30 years. We all agreed how impressive the new buildings were and, now I have

seen the inside of some of the homes, I'm even more impressed. The partnership of Orbit and the local council has delivered much needed housing, including the area's first purpose-built wheelchair accessible home, to a very high standard.'



The new Hollymoor development provides a mix of affordable housing



Mr and Mrs Patel outside the new shop



# Thursday 2 May is Election Day

This May, Epsom and Ewell residents cast their vote for their borough councillors. As this is the last issue of Borough Insight before the elections, we thought it might be helpful to answer some of the questions you may have.

**Q. What will I be voting for?** Local councillors to represent you on the borough council.

**Q. Can I vote?** Yes, if you're registered to vote and aged 18 years or over on polling day. See our website for voter eligibility details, including the latest information for EU citizens. Poll cards are sent to all registered voters before the election confirming their method of voting for this election.

**Q. How do I register to vote?** If you are not already registered, you can register online (it takes around five minutes) or by filling-in a paper form. You will need your national insurance number. For more details see [www.gov.uk/register-to-vote](http://www.gov.uk/register-to-vote)

**Q. How do I vote?** By one of the following options:

1. **In person** - on Election Day at your local polling station. Details will be on your poll card, sent out around four weeks in advance.
2. **By post** - anyone can apply for a postal vote; no reason needs to be given and you can apply to vote by post for a particular election, for a set period of time, or for all future elections.

3. **By proxy (getting someone to vote on your behalf)** - you can only apply for a proxy vote under certain circumstances, including being away on Election Day, having a medical issue or a disability, or not being able to vote in person because of work or military service. You'll need to give the reason.

See key dates below for deadlines to register or apply for proxy votes. Application forms can be found on the council website.

## Key dates

- **Friday 22 March:** Publication of Notice of Election.
- **Thursday 4 April:** Statement of Persons Nominated published.
- **Friday 12 April:** Deadline for UK citizens to register to vote on 2 May.
- **Monday 15 April, 5pm:** Deadline for voters to apply for a postal or a postal proxy vote.
- **Wednesday 17 April:** Postal votes sent out by First class post.
- **Wednesday 24 April, 5pm:** Deadline for voters to apply for a proxy vote.
- **Thursday 2 May:** Election Day. Polling stations open between 7am and 10pm.
- **Friday 3 May:** Counting of votes. Borough election results published on our website.



# A morning in the life of our Electoral Services team



With borough elections coming up in May, it's all hands to the pump for the council's elections team.

A previous election count underway at Bourne Hall. Political agents and candidates keep a close eye on proceedings

**8.30am** Kerry and Fiona are reviewing the project plan for the election to check that preparations are running smoothly. One of today's tasks is to sign-off the draft poll card and postal vote artwork.

**9am** Gill answers an enquiry from a resident whose daughter is away at university and will not be back in time to vote. Advice is given on the absent voting options available.

New legislation, about candidates' published information, sees Tim running a software update to ensure that we meet the latest requirements.

**9.30am** Kerry downloads the latest online voter applications from the registration site.

**9.45am** As all of our borough councillors are elected at the same time, every four years, Fiona is ensuring that the information packs produced for new councillors are up-to-date and cover changes within the borough, latest council policies, and new national regulations.

**9.45am** Sandra phones the printers to confirm arrangements for the issue of postal votes and Gill is busy updating the Register of Electors by checking the details of new residents, those who've moved within or who've left the borough.

**10am** Tim is creating our website pages ahead of publishing the formal election notices.

Kerry reviews the staffing for the election. Each polling station needs trained staff throughout the time the poll remains open, then around 100 people

are needed to take part in the count. Sufficient staff must be in place, plus suitable reserves ready if needed, for the various roles.

**11am** Fiona is looking into arrangements for the new councillors' showcase put-on by council staff to explain what each department does, the challenges faced and how they work with the community.

**11.30am** Sandra helps with postal vote applications. The forms that have come in are scanned, ready for processing.

**11.45am** Fiona is meeting with Kathryn, Council CEO and the Returning Officer, to respond to a formal enquiry from one of the political party's election agents.

Tim talks to the Electoral Commission about media access to the count; it's democracy in action.

However, individual ballot paper details must remain unseen by the cameras, so we follow the latest advice.



# Protecting public land



Unauthorised encampments are being tackled

In the past, Epsom and Ewell has had fewer unauthorised encampments than its neighbours. We operate the Temporary Traveller site on Epsom Downs for the Derby and, because of the area's history, we've a large traveller and gypsy community within the borough in permanent residence.

2018 saw a large increase in the number of unauthorised encampments both here and across Surrey. There are a number of possible reasons for this, and many, the Surrey Police and Crime Commissioner included, highlight the lack of a permanent transient site within the county.

Last year's unauthorised encampments were notable not only because of their frequency but, also, because of the hostility directed towards our staff. And, not least, because of the large quantities of domestic and industrial waste, including building materials and garden waste, that had to be cleared from the land following the encampments.

Having experienced these problems, we've successfully secured new powers to take action over unauthorised encampments after the High Court of Justice granted an interim three-month injunction to protect council-owned sites.

Once the three-month period ends, we will apply to have the interim injunction made permanent, meaning it will be in force for three years.

**KEY PRIORITY:**  
Supporting our community



## Previously...

In 2018, Nonsuch Park, Court Recreation Ground, Hook Road Arena, Alexandra Recreation Ground, Horton County Park and Rosebery Park all saw unauthorised encampments. Each time, we had to follow the letter of the law to move the encampment off these areas; first serving a notice requiring the encampment to leave the land, and if they did not, securing a court date for an order to leave, from the Magistrates Court. We've also a duty to check the health, welfare and education of children at an encampment, whilst complying fully with the Human Rights Act.

## Our new powers...

The High Court was satisfied that both the frequency of the encampments, and the level of disruption and anti-social behaviour caused by the camps, warranted granting an interim injunction. This means:

- Individuals, or groups, who set up an unauthorised camp on council land can be immediately arrested for contempt of court. Sentences can range from a fine to imprisonment.
- Any encampment on 56 sites within the borough, including car parks, parks and other public green spaces, is banned.
- As well as covering residential uses, the disposal of waste on all the sites is banned.



# Watchdog update

Viewers of the BBC's Watchdog programme last October may have seen an extreme example of fly-tipping featured in the Rogue Traders section.



One of our Environmental Health team at the Epsom fly-tip which has now been cleared

Watchdog presenter Matt Allwright said: 'We've been covering fly-tipping on Rogue Traders for 15 years at least, and I have never seen it being carried out on the scale it is right now. It's posing a risk to our countryside (and) it leaves a hole in public finances for taxpayers to fill.'

Disposing of waste in an environmentally safe and legal way is costly. So criminals offer to remove items from homeowners and businesses for a fraction of the charge made by legitimate waste companies, and then fly-tip the rubbish.

We will always prosecute those caught fly-tipping but it is not always possible to catch the culprits in the act. However, we've additional actions open to us.

When it happens, our Environmental Health team examines fly-tipped rubbish to find out where the waste comes from. In tracking down items featured on Watchdog to various addresses in north London, we discovered some of this rubbish originated from a restaurant, which according to its social media posts and advertising material, was refurbished over the summer. As a result, old restaurant ornamentation turned-up in the fly-tip.

They'd not physically throw this building waste into the street, but the restaurant's owners couldn't prove that their rubbish had been disposed of appropriately. Consequently, we issued them with a £400 Fixed Penalty Notice, as failure to check the waste carrier's credentials meant they'd failed in their 'duty of care' – itself a criminal offence.

Our team is continuing to pursue a number of individuals and businesses identified from rubbish within the fly-tip.

**KEY PRIORITY:**  
Keeping our borough  
clean and green



## Don't be fooled

If as a householder or business you hire someone to remove your waste, get their full name, address, phone number and vehicle registration number; check that they are licenced by the Environment Agency; and always get a receipt.

To check a waste carrier's ID, visit <https://environment.data.gov.uk/public-register/view/search-waste-carriers-brokers>

## SMILE PLEASE!

We're in the process of installing monitoring equipment, including CCTV, in some areas of the borough repeatedly targeted by fly-tippers.





# News bytes

News featured or about to be featured in more depth online including e-borough Insight (your monthly borough update on news, features, events, community info and lots more! [Subscribe at insight.epsom-ewell.gov.uk/subscribe](http://insight.epsom-ewell.gov.uk/subscribe)).

## ► Community safety

Alcohol related nuisance or anti-social behaviour that has a negative effect on the quality of life for communities in Epsom, Ewell and Langley Vale is being tackled, thanks to recent updates to Public Spaces Protection Orders. These PSPOs can only be introduced by the local authority and only in liaison with the police and the police and crime commissioner.

## ► Horton Chapel

After many years of standing empty, we're delighted to report that the volunteer-led charity, Horton Chapel Arts & Heritage Society has now taken over this Grade II listed building. The society is leading the project for the chapel's conversion to a not-for-profit arts centre. It's a vision that's been developed in consultation with the community and local partners, and is supported by the Heritage Lottery Fund, Architectural Heritage Fund and Power to Change. Visit [hortonchapelproject.org](http://hortonchapelproject.org)

## ► Job clubs

Anyone living within the borough who's unemployed or working less than 16 hours per week and is looking for employment should head down to ETHOS. This job hub at Epsom Methodist Church provides advice, guidance and support with learning and employment skills on Fridays between 12 noon and 2pm. With laptops

and internet access provided, applying for jobs, searching for training or courses, and creating CVs is made easy.

And there's more assistance available in the north of the borough at Stoneleigh Job Club. You might be looking for your first job or are returning to work, want to upskill or may be thinking about a change of job, perhaps, becoming self-employed. Stoneleigh Job Club is held in Stoneleigh Library community room, every Tuesday between 10am and 12 noon, see [www.stoneleighjobclub.co.uk](http://www.stoneleighjobclub.co.uk)

## ► Cemetery extension

There are 30,000 people buried in the Ashley Road Cemetery, with 200 interments at the cemetery each year. The council's acquisition of the green field site, to the south of the present cemetery, means that we can continue to offer this facility for the up to the next 30 years.

## ► Partnership working

The Surrey Police and Crime Commissioner is providing a contribution towards our efforts, in partnership with Surrey Police, to tackle anti-social behaviour and environmental crime. The funding of £50,000, over two years, will go towards the training costs associated with our increased role in putting a stop to this activity.



## ► Borough Insight survey

Our thanks go to everyone who took part in last year's survey about this magazine's future. Opinions were split, with strong views both for continuing and terminating Borough Insight in its paper format. Having listened to residents' feedback, councillors have asked for the magazine to continue, three times a year for at least the next two years, on the understanding we continue to try and reduce the cost to the council tax payer. We hope that you enjoy reading it.

## ► Business bins

As a licensed waste carrier based in the heart of Epsom and Ewell, the council helps hundreds of local businesses dispose of their waste safely and efficiently. With competitive rates for businesses of all sizes, and the increased throughput helping to ensure residents' weekly waste and recycling services remaining sustainable, it's a win-win for everyone.

## ► Future workforce

As part of our commitment to young people locally, last summer internships were provided at the council in areas as diverse as finance and sports development. The youngsters have all returned to higher education and, with both sides declaring the experience a success, the initiative is set to be repeated in 2019. We will also be increasing the number of apprenticeships we provide.

## ► Citizens Advice Epsom & Ewell

One of the country's longest-running bureaux, Citizens Advice Epsom & Ewell is celebrating its 80th birthday this year. They offer free, confidential, independent and impartial advice on a range of issues including: welfare benefits, money and debt, employment, family and relationships, education and healthcare, and consumer issues. The telephone advice service operates weekdays between 10am and 4pm on 0300 330 1164. Additionally, drop-in sessions are run at Epsom's Old Town Hall, visit [www.cae.org.uk](http://www.cae.org.uk) for more information.

## ► Specsavers Surrey Youth Games 2019

This year's largest annual youth multi-sports competition in the county, sees more than 2,000 young people descend on Surrey Sports Park in Guildford, on Saturday 15 and Sunday 16 June. Aged between six and 16 years, and representing all 11 boroughs and districts, the youngsters can get involved in a new sport and benefit from free coaching.

Flush with topping the medal tally at this Olympic style event in 2018, Team Epsom & Ewell hope to secure more success this summer. For more information and for a chance to join them, register online now at [www.epsom-ewell.gov.uk/syg](http://www.epsom-ewell.gov.uk/syg)



# Remembering Emily Davison

A £50,000 fundraising campaign, led by local residents and backed by the borough council, is currently underway to create a memorial to the trailblazing suffragette Emily Wilding Davison.



Artist Christine Charlesworth and a model of the Emily Davison sculpture for Epsom

If successful, the plan is to install a life-size bronze statue in Epsom's redeveloped Market Place, adding to a number of similar statues of suffragettes unveiled nationally in the past few years.

Emily died at Epsom's Old Cottage Hospital in 1913, four days after running out in front of the King's horse during the Epsom Derby. Until recently, many thought she'd committed suicide. However, new evidence suggests she was attempting to attach a suffragette banner to the horse's bridle as it passed the Royal Box, in order to highlight the campaign for votes for women.

The artist commissioned to make the work is Surrey-based sculptor Christine Charlesworth, an elected member of the Society of Women Artists and the Royal Society of Sculptors. She's passionate about commemorating Emily in a way that conveys her true personality, not the one-dimensional caricature that persisted for so long.

'Emily was an extremely intelligent woman and had gained two First Class university degrees. She loved poetry and sport, especially cycling, and was said to have had a good sense of humour,' says Christine, 'she was imprisoned many times for her direct actions, went on hunger strike seven times and was subjected to force feeding no less than 49 times.

'I want to create a life-size portrait figure of Emily, sitting and chatting to anyone who would like to

get to know her. She will be holding a census form, and beside her on the bench will be the mortar board that she always wore during marches and some of her favourite books. She will be wearing the hat she wore on that fateful day at the racecourse, her Suffragette medal, her Highgate Prison badge and her hunger strike medal with seven bands.'

Sarah Dewing, Chair of the Emily Davison Memorial Project, adds: 'It is time that Emily Wilding Davison is properly recognised; it is due to her sacrifice, and that of many others, that women today have equal rights in law and opportunities to fulfil their potential that Emily's generation could only dream of.'

## Giving your support

Anyone who donates over £1,000 towards the statue will be credited on all promotional material and on social media. Donors giving £5,000 or more will also have their name engraved on the statue and will be invited to a VIP unveiling event.

To find out more, please visit [www.emilydavisonproject.org](http://www.emilydavisonproject.org), or the Emily Davison Memorial Project Facebook page. You can contact the project at: [info@emilydavisonproject.org](mailto:info@emilydavisonproject.org)



# Future40

## progress

Five months ago, we launched Future40, an ambitious plan to develop a long-term vision for Epsom and Ewell. Since then, it's been all systems go: the campaign sparking a wave of interest across the borough, with over 3,200 residents, visitors and businesses taking part.



A big thank you to everyone who has got involved so far. We've had a tremendous response and it's clear to see how much pride you feel for your borough and how much you welcome the opportunity to help shape its future success.



More than 1100 people took part in the first-stage online questionnaire, describing how they feel the borough is now and how they would like to describe it in the future. Hundreds of you have also attended workshops and events, and visited the dedicated Future40 website.

Stage two of the project will explore the recurring themes in even greater detail, enabling us to truly establish what sort of place residents, businesses and visitors think the borough should be within the next 20, 30, even 40 years' time.

So now, a wide range of additional community-based activities and events are being held to enable more people to contribute their views and to look in more detail at the emerging ideas.

This includes our very own Art Competition for children and young adults. The theme is 'Proud of our past, preparing for our future' and as well as receiving a prize, the winning entries will be displayed in the Town Hall and on the final vision plan for Epsom and Ewell.



### Have your say

Help us by continuing to give your views and get involved at [www.future40.org](http://www.future40.org) where there's a full list of events and more info available. You can also follow [@EpsomEwellBC](https://twitter.com/EpsomEwellBC) on Twitter, Facebook and Instagram using the hashtag [#Future40](https://www.instagram.com/hashtag/Future40).







quality coach holidays **GARDINERS**  
NMC

**QUALITY COACH HOLIDAYS  
& DAY EXCURSIONS FOR  
2019**

**UK AND CONTINENTAL  
COACH HOLIDAYS**

- Free Home Collection
- Friendly Tour Managers
- 3 Star Plus Quality Hotels
- Modern Luxury Coaches

Excursions and Entrances Included

**GARDINERS** NMC

Call 01372 610000 or  
Visit [www.gardinersnmc.co.uk](http://www.gardinersnmc.co.uk)

**EPSOM CHORAL SOCIETY** 

**MODERN  
CHORAL  
CLASSICS**

**Bernstein Chichester Psalms**  
**Lauridsen Nocturnes**  
**Whitacre Cloudburst**  
**Chilcott Songs and Cries of London Town**

Julian Collings – conductor  
with the Regent Chamber Ensemble  
Marion Lea – piano, Peter Jaekel – organ/piano  
Alexander Gillan – treble soloist

**SATURDAY 16th MARCH 2019 at 7.30pm**  
**St Martin's Parish Church**  
Church Street, Epsom KT17 4PX

Tickets: £15, student or under 18 £7.50  
Box Office: 01372 727078 | website: [www.epsomchoral.org.uk](http://www.epsomchoral.org.uk)  
Registered Charity No. 273757



*The New French Club of Epsom & Ewell*

- Improve your knowledge of French and French culture
- Socialise with others with similar interests.
- Presentations given by expert/native French speakers
- Benefit from films/learning aids & opportunities to speak
- Regular social events, Bastille day lunch, visits, etc.

Led by a native speaker and past president of the Cercle Français of Sutton, sessions will be held monthly between January and July at Glyn Hall, Cheam Road, Ewell, KT17 1SP, starting at 7.00 pm.

For further information, please contact Mrs Colette Burch-Avarre on:  
0208 393 3890 or [coletteburchavarre@sky.com](mailto:coletteburchavarre@sky.com)



**Time for some  
Help at Home?** 

Contact us on:  
**01883 343095**  
[www.ageuk.org.uk/surrey](http://www.ageuk.org.uk/surrey)

**Noticed a change  
in an older person  
in your family?**

Call us today to find out how we can support you or your family member to remain happy and independent at home.



 **Cleaning**  **Companionship**  **Shopping**  **Gardening**

**All Home Helps are security checked**  
1BI0319 Registered Charity No: 1036450



# Epsom Playhouse

The Epsom Playhouse is proud of its status as the borough's cultural centrepiece and with the council's backing is able to support community led artistic endeavours. Here are three such productions coming this spring.

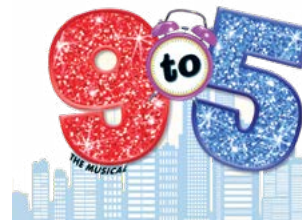


## Legends of Romance Saturday 2 March

This exciting Epsom Symphony Orchestra concert features Rimsky-Korsakov's inspired orchestral fantasy 'Scheherazade' which describes the adventures of Sinbad the Sailor in glittering musical colours. Tchaikovsky's dramatic tone poem Francesca da Rimini starts the concert, which will also feature 22 year old award-winning trumpet player Matilda Lloyd performing the brilliant Arutunian Trumpet Concerto.



## 9 to 5 the Musical Tuesday 19 - Saturday 23 March



Epsom Players stage this hilarious story of friendship and revenge that is in turn outrageous, thought-provoking and even a little

romantic. Based on the hit movie set in the late 1970's, three female co-workers, pushed to boiling point, conceive a plan to get even with their sexist, egotistical, lying, hypocritical, bigot boss.

## Hot Mikado Tuesday 9 - Saturday 13 April

If you like your jazz hot and your comedy cool, you will love this sizzling musical from Epsom Light Opera Company! Hot Mikado is an updating of Gilbert and Sullivan's masterpiece, with modern jazz arrangements of Arthur Sullivan's glorious music whilst retaining all of WS Gilbert's biting acerbic wit. This show has everything; beautiful ballads, stunning choreography and laugh-out-loud humour. The show is set in Japan in the late 1940s and transports you to the fantasy city of Titipu, where a ban on flirting has just been passed...

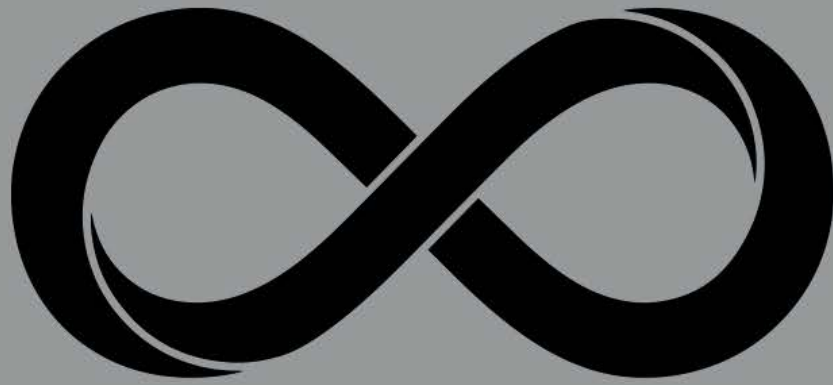


**KEY PRIORITY:**  
Supporting our community



**KEY PRIORITY:**  
Supporting businesses and our local economy





# INTEGRATED LOGIC

Working with our customers to make the complex simple

Providing services in:

- *Electrical Installation*
- *Electrical Maintenance & Repair*
- *Lighting Design & Intelligent Control*
- *Smart Home Automation*
- *TV, Music & Wi-Fi*
- *Security & Access Control*

[www.integratedlogic.co.uk](http://www.integratedlogic.co.uk)

T: +44 (0) 1372 742 682

E: [info@integratedlogic.co.uk](mailto:info@integratedlogic.co.uk)





# Council meetings

March 2019

- 7 Licensing and Planning Policy Committee
- 12 Health Liaison Panel, 7pm
- 14 Planning Committee
- 19 Community and Wellbeing Committee
- 26 Environment and Safe Communities Committee

Visit our website to view the full year's calendar of meetings, download agendas or review minutes of previous meetings.

All meetings are at the Town Hall, Epsom and start at 7.30pm unless otherwise stated. Meetings may be cancelled or additional meetings arranged as necessary. Agenda papers are available online to

download five clear working days before a meeting and are accessible via the mod.gov app.

For more information contact Democratic Services on 01372 732000 or email [contactus@epsom-ewell.gov.uk](mailto:contactus@epsom-ewell.gov.uk), quoting the committee or matter you are interested in – we are always happy to help.

## Epsom & Ewell Local Committee (Surrey County Council) meeting:

Date: Monday 25 March 2019

Time: 7pm

Venue: Bourne Hall, Spring Street, Ewell KT17 1UF

Please note, the date and venue could be subject to change. Visit [www.surreycc.gov.uk/epsomandewell](http://www.surreycc.gov.uk/epsomandewell) for more details and confirmation of the venue, please contact Nicola Morris on 020 8541 9437 or email [nicola.morris@surreycc.gov.uk](mailto:nicola.morris@surreycc.gov.uk) Follow on Twitter [@EpsomLC](https://twitter.com/EpsomLC)

# Our key priorities 2016-2020

Our key priorities are published on our website. Relevant articles within this issue have the respective key priorities mentioned, so you can identify how we are working towards achieving our targets.



## Useful contacts

Did you know? You can view our A to Z services, apply, report or pay for it online on our website through our online forms.

### Epsom & Ewell Borough Council services and queries:

Town Hall, The Parade, Epsom KT18 5BY

Email: [contactus@epsom-ewell.gov.uk](mailto:contactus@epsom-ewell.gov.uk)

Phone: 01372 732000

Website: [www.epsom-ewell.gov.uk](http://www.epsom-ewell.gov.uk)

### Community & Wellbeing Centre

Sefton Road, Epsom, KT19 9HG

Phone: 01372 727583

Email: [wellbeingcentre@epsom-ewell.gov.uk](mailto:wellbeingcentre@epsom-ewell.gov.uk)

### Rainbow Leisure Centre

East Street, Epsom, KT17 1BN

Phone: 01372 727277

Email: [rainbow@gll.org](mailto:rainbow@gll.org)

Website: [www.better.org.uk/leisure-centre/epsom-and-ewell/rainbow-leisure-centre](http://www.better.org.uk/leisure-centre/epsom-and-ewell/rainbow-leisure-centre)

### Epsom Playhouse

Ashley Avenue, Epsom KT18 5AL

Phone: 01372 742555

Email: [playhouse@epsom-ewell.gov.uk](mailto:playhouse@epsom-ewell.gov.uk)

Website: [www.epsomplayhouse.co.uk](http://www.epsomplayhouse.co.uk)

### Bourne Hall

Spring Street, Ewell KT17 1UF

Phone: 020 8393 9571

Email: [BourneHallMailbox@epsom-ewell.gov.uk](mailto:BourneHallMailbox@epsom-ewell.gov.uk)

Website: [www.bournehall.org](http://www.bournehall.org)

### Ewell Court House

Lakehurst Road, Ewell KT19 0EB

Phone: 020 8786 7400

Email: [EwellCourtHouseMailbox@epsom-ewell.gov.uk](mailto:EwellCourtHouseMailbox@epsom-ewell.gov.uk)

Website: [www.ewellcourthouse.org](http://www.ewellcourthouse.org)

# Dear diary

## March

**FREE! Saturday 9, Herald of Spring: Bourne Hall, Spring Street, Ewell KT17 1UF, 9.30am - 5pm.** This year's theme is 'Superheroes' with prizes on the day for the best-dressed superhero! The annual family event features floral displays by the Mayday Flower Club; a show garden from Ashtead Park Garden

Centre; local countryside groups and a spring market including kids activities by Rainbow Leisure Centre and Bourne Hall Museum Kids Club, Hobbledown puppet show and Close-Up Magic. **Bourne Hall, Spring Street, Ewell KT17 1UF, 9.30am - 5pm.**

**Guided walk! Sunday 17 Explore Epsom Common's past. Meet at the Stew Pond car park, 1pm.**

**Bourne Hall Museum Kids Club! Saturday 23, Ruthless Romans: Discover what it was like to be a Roman soldier, 1pm - 2.30pm.**

## April

**Bourne Hall Museum Kids Club Easter holiday activities!**

**Saturday 13, Tudor Tyranny:** Enjoy an audience with King Henry VIII, 11am - 12noon or 1.30pm - 2.30pm.

**Tuesday 16, Flint Knapping:** Learn to shape flints like the ancient Stone Age craftsmen. For children aged 10 years and over. £15 per child, payable in advance.

11am-12.30pm or 2pm-3.30pm (15 children max per session).

**Thursdays 18 and 25, Cave Painting:** Create your own cave painting in our very own 'caves'. 11am - 12noon or 2pm - 3pm (16 children max per session).

**Guided walk! Sunday 28, Discover Horton Country Park's springtime beauty: Meet at the Information Centre, 2pm.**

## May

**Bourne Hall Museum Kids Club! Saturday 11, The Epsom Riot:** Discover what Epsom was like at the end of WW1 and what led to the Riot of 1919, 1pm - 2.30pm.

**FREE! Sunday 12, Round the Borough Bike:** Starting and finishing at Horton Country Park, this 20-mile route explores our beautiful open spaces and nature reserves including the Epsom Downs, Epsom Common, Nonsuch Park, and the Hogsmill. Open to

all ages and abilities; off-road cycles are recommended for this ride. View the route and sign up today at [www.epsom-ewell.gov.uk/rbhb](http://www.epsom-ewell.gov.uk/rbhb)

**FREE! Wednesday 15, Epsom and Ewell Employment Fair:** Meet potential local employers who are recruiting. **Rainbow Leisure Centre, East Street, Epsom KT17 1BN, 11am-3pm.** For more info visit [www.facebook.com/EpsomandEwellEmploymentFair](http://www.facebook.com/EpsomandEwellEmploymentFair)

**Guided walk! Sunday 19, Horton Country Park wildflowers walk: Meet at the Information Centre, 2pm.**

## June

**Guided walk! Sunday 2, Hogsmill River wildlife and history walk: Meet at Ewell Court House, 2pm.**

**Bourne Hall Museum Kids Club! Saturday 8, D-Day:** Find out what happened on WW2's longest day, which led to the liberation of Europe, 1pm - 2.30pm.

**Guided walk! Sunday 23, Spot and identify dragonflies and butterflies in Horton Country Park: Meet at the Information Centre, 2pm.**

Bourne Hall Museum Kids Club activities cost £5 per child (unless where stated) and includes one accompanying adult. To book contact David Brooks, phone 020 8394 1734, email [dbrooks@epsom-ewell.gov.uk](mailto:dbrooks@epsom-ewell.gov.uk).

Guided local nature reserve walks are £5 for adults and £2.50 for children (16 years or under).

For more info and to book visit our website.

**KEY  
PRIORITY:**  
Supporting our  
community







## Epsom & Ewell

A local Estate Agent with  
local knowledge

With over 15 years' experience in **Epsom...**

We are **The Local Agent**



The **local** agent

[thelocalagent.co.uk](http://thelocalagent.co.uk)

For a free valuation and the best rates around, call us on:

**01372 253 252**

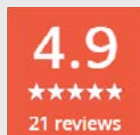
[sales@thelocalagent.co.uk](mailto:sales@thelocalagent.co.uk)





**Total Home Solutions**  
Heating • Plumbing • Electrical

part of the **Smith & Byford** group



# Stay Covered

Our Premier Gas maintenance package provides total peace of mind for just **51p** per day



## Gas & Electrical Premier Packages

The **Total Solution** for all of your Gas & Electrical maintenance, servicing and breakdown needs

### Included in Premier Gas:

- Annual Boiler Service
- Parts & Labour
- Unlimited Callouts
- No Excess
- Emergency Service 24/7
- Pump, Control, Pipework & Radiator Repairs

**10%**

off all packages  
quote **SAVE10\***

**020 8722 3439**

[ths@smithandbyford.com](mailto:ths@smithandbyford.com)

[www.smithandbyford.com](http://www.smithandbyford.com)

36 The Broadway, Cheam Village, SM3 8BD

\*T&C apply, see in store for details. 10% off until 30th June 2019